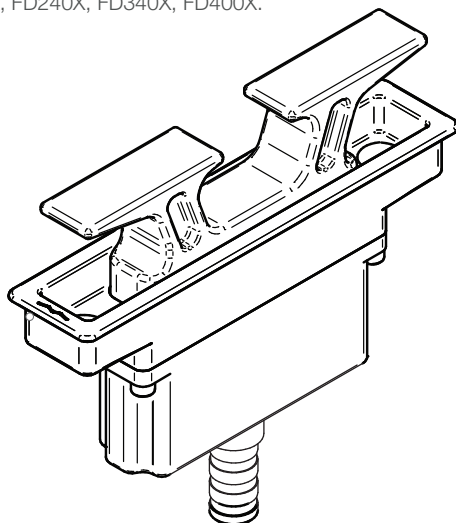


## Installation instruction

### *Flush cleat. Aluminium / Stainless steel*

Flush cleat: FD200, FD240, FD340, FD400, FD200X, FD240X, FD340X, FD400X.



**CAUTION.** Read all instructions carefully before installing and using this product.

#### 1. REQUIRED FOR INSTALLATION.



Template



Drill



Non acidic degreaser



Polyurethane marine sealant



Anti-corrosion lubricant



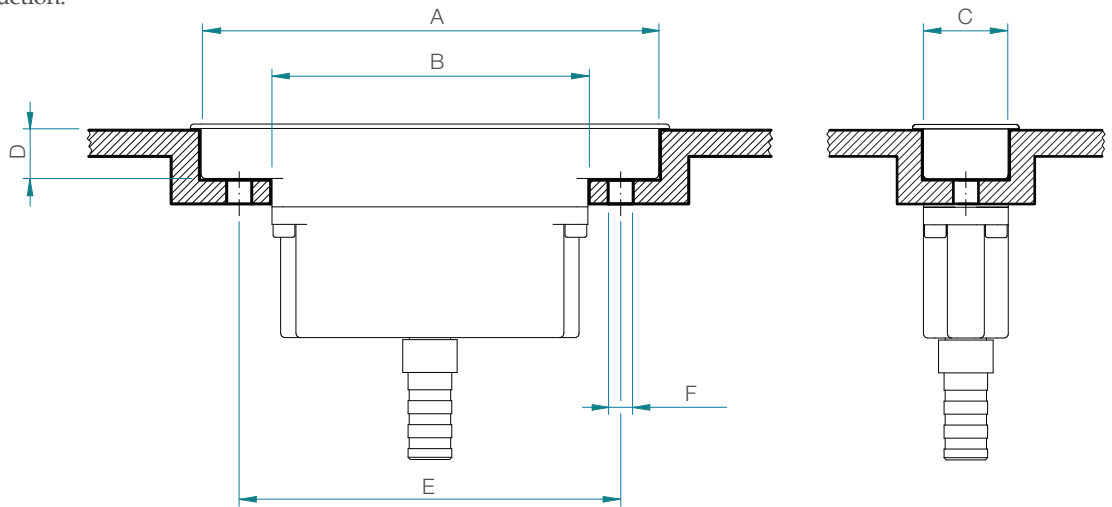
Threadlocker

## Installation instruction

### Flush cleat. Aluminium / Stainless steel

#### 1. DECK ARRANGEMENTS

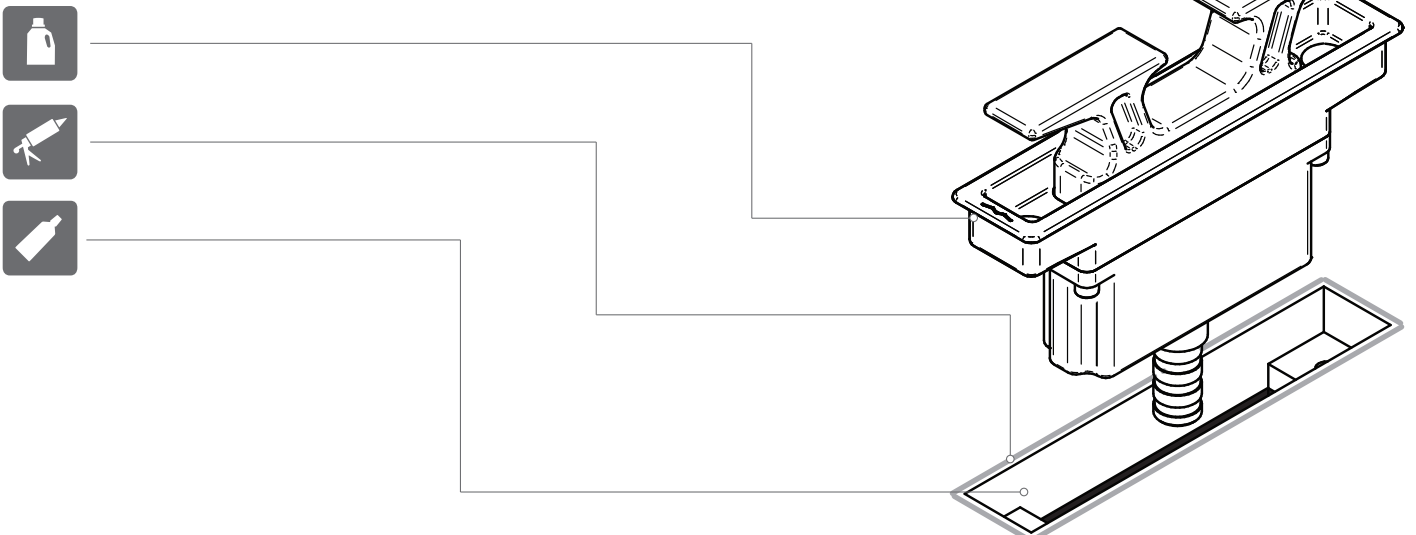
Prepare adequate housing for cleat installation, according to the following instruction.



Type	A (mm)	B (mm)	C (mm)	D (mm)	E (mm)	F (mm)
FD200 / FD200X	210	146	40	23	175	Ø 10
FD240 / FD240X	262	176	53	27	210	Ø 10
FD340 / FD340X	363	251	68	35	300	Ø 12
FD400 / FD400X	425	281	79	42	340	Ø 16,5

#### 2. CLEAT PREPARATION

Carefully clean the cleat and apply a small bead of marine sealant.



## Installation instruction

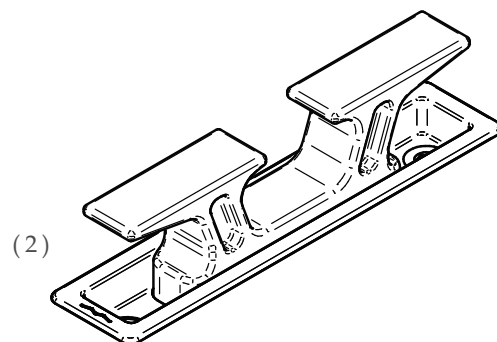
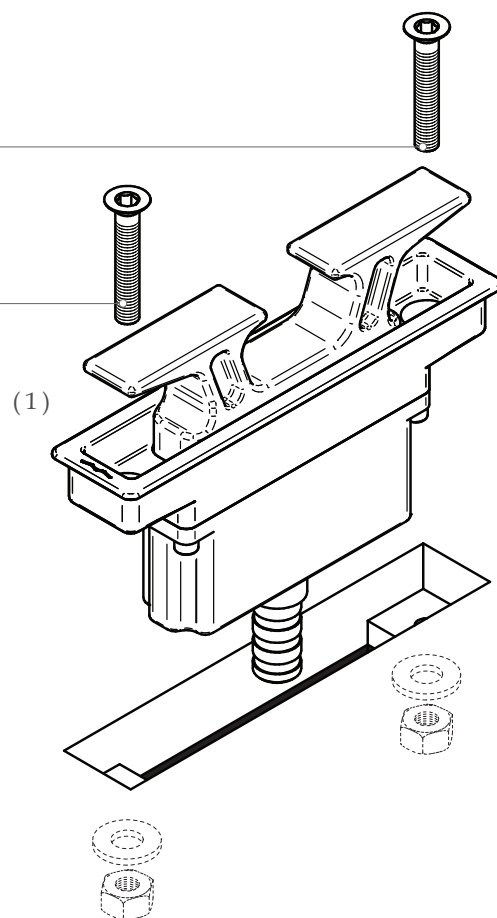
### *Flush cleat. Aluminium / Stainless steel*

#### 3. INSTALLATION

Place the cleat into the housing, then place the screws (we recommend to use anti-corrosion lubricant into the screw holes).  
Use washers between screws and nuts and tighten firmly.



Type	Screw (mm)
FD200 / FD200X	M10
FD240 / FD240X	M10
FD340 / FD340X	M12
FD400 / FD400X	M16



## Installation instruction

### *Flush cleat. Aluminium / Stainless steel*

#### 4. DRAINAGE

Connect the hose fitting into the cleat base and connect the drain pipe.

